

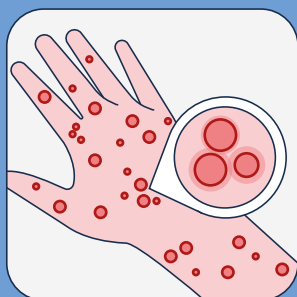


Do you know how to collect and transport Monkeypox samples?

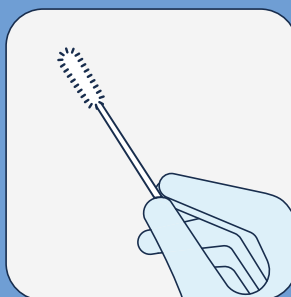
Since May 2022, the number of monkeypox cases are constantly rising. As a result, WHO declared monkeypox a public health emergency and released interim guidelines and information about the virus: transmission, symptoms, how to collect samples, and how to diagnose the disease.

Sample collection

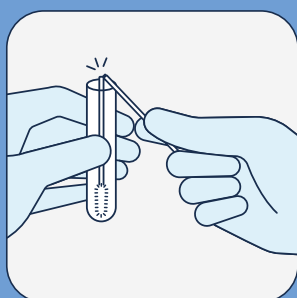
The WHO recommends collecting lesion exudate or crust for monkeypox infection screening, as well as obtaining oropharyngeal samples. Collected with a swab, the specimen can then be dried or resuspended in a viral transport medium. Even if not specifically quoted by WHO, eNAT® - inactivating media - represent an alternative to standard viral transport media which is also capable to inactivate the sample infectivity and preserve DNA and RNA at RT up to 4 weeks. This document provides a list of Copan's products suitable for monkeypox sample collection.



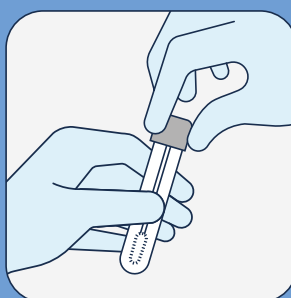
1. 2-3 lesions should be sampled collecting one or two swabs, based on internal guidelines.



2. Use a FLOQSwab® to swab the lesion vigorously, in order to collect an adequate amount of sample.



3. Break off the swab applicator using the molded breakpoint into the tube containing the transport media, either UTM® or eNat®. Alternatively, transport the swab dry in a sterile, empty tube.



4. Transport the swab to the lab using a transport medium (e.g., UTM® or eNat®) or dry in a tube under required conditions. Check your institution's guidance on swab transport and a list of transport media that may be used for different reference laboratories.

Copan White paper

With our White Papers, we aim to promote a better understanding of our products and help healthcare professionals select the proper device according to their needs.



To learn more about monkeypox diagnostic methods and international guidelines, download and read our White Paper *"Monkeypox: sample collection and diagnostic techniques."*

Code	Description	Pack size
UTM® - NAAT and culture		
Kit: Media + swab		
346C	16x100mm tube filled with 3ml UTM® medium + 1 regular FLOQSwabs® with molded breaking point	300 pieces (6 boxes of 50 kits)
359C	12x80mm tube filled with 1ml UTM® medium + 1 regular FLOQSwabs® with molded breaking point	300 pieces (6 boxes of 50 kits)
Only Media		
330C	16x100mm tube filled with 3ml UTM® medium	300 pieces (6 boxes of 50 pieces)
350C	12x80mm tube filled with 1ml UTM® medium	300 pieces (6 boxes of 50 pieces)
eNAT® - viral inactivation for NAAT		
Kit: Media + swab		
608CS01R	1ml eNAT® transport and preservation medium in 12x80mm screw cap tube + 1 regular FLOQSwabs®	500 pieces (10 boxes of 50 pieces)
606CS01R	2ml eNAT® transport and preservation medium in 12x80mm screw cap tube + 1 regular FLOQSwabs®	300 pieces (6 boxes of 50 pieces)
Only Media		
608C	1ml eNAT® transport and preservation medium in 12x80mm screw cap tube	300 pieces (6 boxes of 50 pieces)
606C	2ml eNAT® transport and preservation medium in 12x80mm screw cap tube	300 pieces (6 boxes of 50 pieces)
DRY FLOQSwab® - for dry transport		
552C	Regular FLOQSwab® in tube - 80 mm breaking point	1000 pcs (10 boxes of 100 pcs in a case)
DRY FLOQSwab®		
502CS01	Regular FLOQSwab® in pouch - 80 mm breaking point	1000 pcs (10 boxes of 100 pcs in a case)
519CS01	Regular FLOQSwab® in pouch - 100 mm breaking point	1000 pcs (10 boxes of 100 pcs in a case)

*Suggested table. Please refer to your GLP procedures to choose the most appropriate device for the specific sampling site



@copangroup

Copan Italia s.p.a.
Via Francesco Perotti 10,
25125 Brescia, Italy

t | f +030 2687211
@ | info@copangroup.com
www.copangroup.com